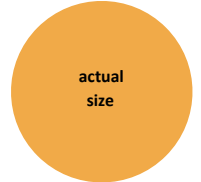


Features

- Constructed from pooled normal primary adult human fibroblasts and neonatal foreskin primary human keratinocytes
- **Substantially improved strength and barrier integrity due to the novel method of construction of the dermis using polymerised fibrin as the supporting matrix, naturally anchored to a plastic insert for ease of manipulation and handling**
- The entire dermal matrix being secreted by the fibroblasts in the dermal compartment, creates a fully natural and complex mix of extracellular matrix (ECM) proteins
- **The significantly improved robustness makes Labskin compatible with many standard application and sampling protocols, making it useable in a wider range of applications than other models**

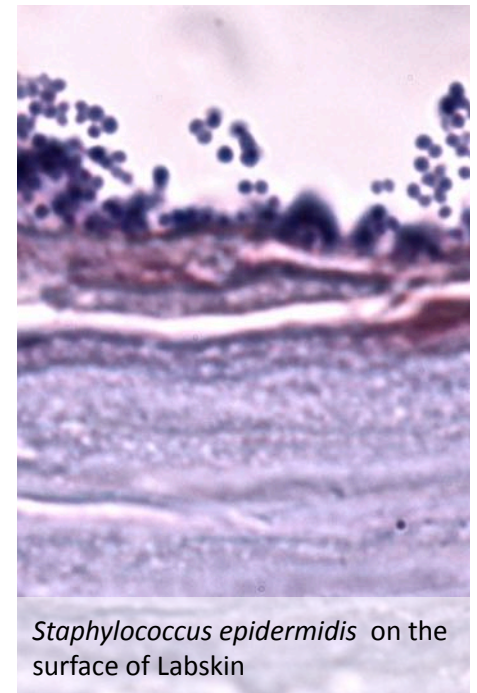
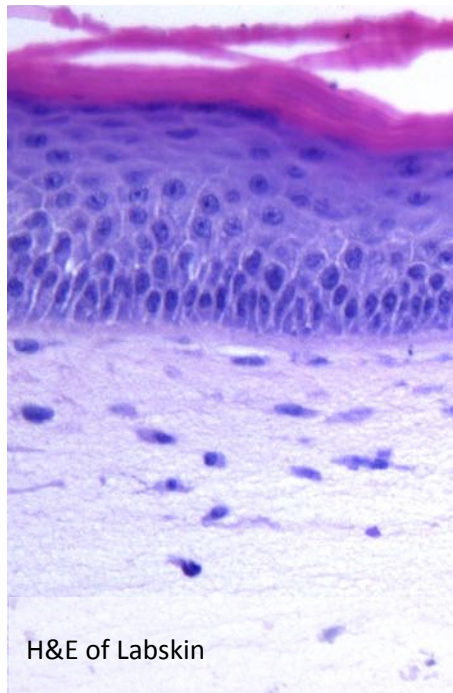
Labskin^{4.5}

- Insert diameter = 2.4cm (area = 4.5cm²)
- Ideal for applications that require extensive manipulation of the tissue or multiple assays from the same sample
- Easy to handle and to apply standard techniques
- Kit contains 6x inserts of Labskin^{4.5}, 1x culture plate, Maintenance Medium (for up to 14d culture)



Labskin^{1.1}

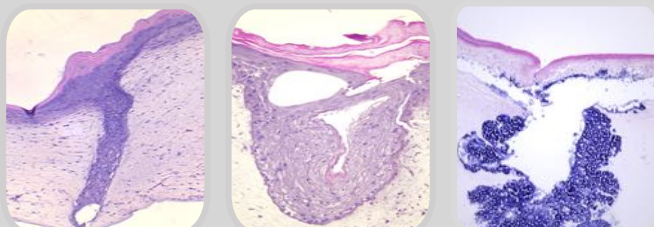
- Insert diameter = 1.2cm (area = 1.1cm²)
- Suited to applications where multiple biological replicates are required
- More useable & versatile than competitor models and suitable for screening and dosing applications
- Kit contains 12x inserts of Labskin^{1.1}, 1x culture plate, Maintenance Medium (for up to 14d culture)



contact us

Labskin UK Ltd.
NAFI Campus, Sand Hutton, York YO41 1LZ
+44 (0)1904406083 info@labskin.co.uk

Labskin for Wounding & Healing



Incision Wound

Thermal Wound

Infected Wound

Labskin for assessing Anti-Ageing

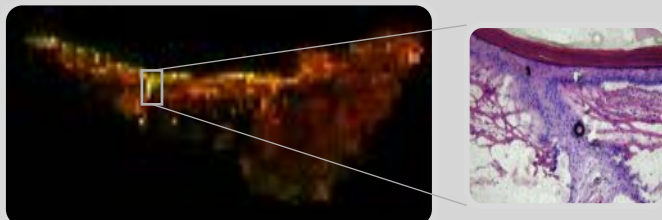
Assessment of pro-collagen-1 production by immuno-histochemistry (IHC) in dermal fibroblasts can be used to support anti-ageing claims

Dermal fibroblast labelling



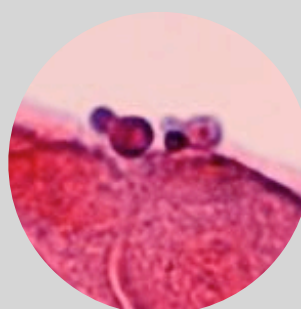
Labskin with MALDI-MSI

- Matrix Assisted Laser Desorption Ionisation-Mass Spectrometry Imaging
- Simultaneous multi-analyte detection
- Label-free *in situ* tissue analysis
- Visual spatial distribution of analytes in tissue

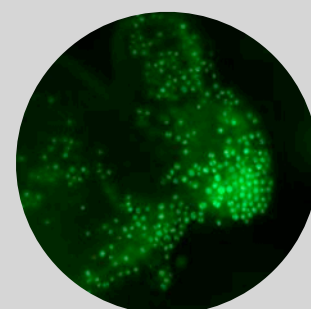


Labskin for Skin Microbiome assays

Using Labskin for skin microbiology, hygiene microbiology and microbiome studies

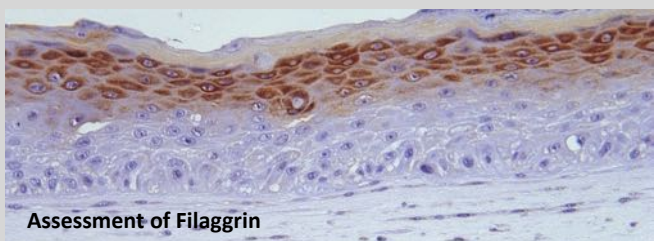


Budding Malassezia on Labskin

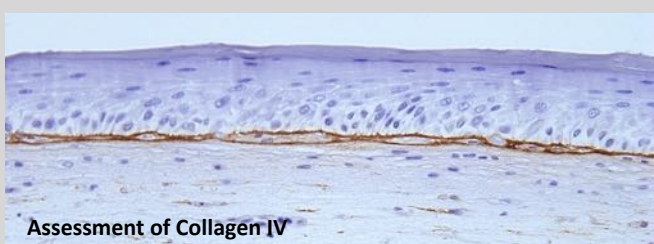


Staphylococci colonising Labskin

IHC and Labskin



Assessment of Filaggrin



Assessment of Collagen IV

Labskin for Dermatophyte invasion

Invasion of Labskin with *Trichophyton rubrum* for use in evaluating anti-dermatophyte treatments.

